



Year Anniversary
Serving Industry Since 1991

Service
●
Parts
●
Solutions

For Solutions, Contact us:

T: (888) 480-0680 F: (909) 350-4982 E: sales@groupactinc.com

For more information, please visit our website: GroupACT.COM



TABLE OF CONTENTS

Introduction to ACT

Service & Installation Capabilities

- ***General Installation***
- ***Belt Services***
- ***Distribution & Manufacturer Services***
- ***Silo Cleaning***
- ***Dust Collection***
- ***Industrial Ventilation***

Product Line

- ***Dust Suppression-Fog & Foam***
- ***Conveyor Belting***
- ***Skirting***
- ***Belt Cleaners***
- ***Air Cannons***
- ***Vibration***
- ***Transfer Point Technologies***
- ***Idlers & Pulleys***
- ***Railcar Unloading***
- ***Level Indicators & Plug Detection***
- ***Pumping***

Corporate Office

Reference List

License, Certifications and Safety



Introduction to The ACT Group

OUR COMMITMENT & OUR TEAM

The ACT Group is a dedicated company committed to offering a complete selection of material handling and dust control solutions to our customers. Our specialized components and project capabilities have assisted plants throughout the nation with increasing productivity, enhancing safety, and improving facility cleanliness. The ACT team is capable of providing complete turnkey project design and specifications, system or component proposals, EPC services, and individual part sales. Our focus and experience with material handling systems makes certain that work is performed safely, on time, and on budget. ACT installation and service crews take ownership of and pride in the work they perform. ACT technical and office staff continually look for opportunities that will make a critical difference in your facility's performance and profitability.



Our Sales, Engineering, Projects, Shop and Field personnel are courteous, professional, and committed to quality and customer satisfaction. Having been in business for over 20 years, ACT has earned the reputation of providing honest and reliable work for a fair price. The ACT team is here to make a critical difference in moving your operation to the next level. Whether your need is large or small, our material handling and dust control experts are just a phone call or e-mail away. Our promise to you is that we will work diligently to improve and optimize the day-to-day handling of bulk materials in your plant.

ACT MISSION STATEMENT

**Making our customer's operations safer, cleaner
and more productive, through superior customer service,
unmatched quality and a commitment to excellence.**



General Installation

FIELD SERVICES

The ACT Group's trained and experienced staff of field technicians are available for new project installations, routine service inspections, maintenance contract work, and 24 hour emergency service. Our field personnel consist of Working Supervisors, Millwrights/Welders, Mechanics, and Mechanic Assistants. Dispatched from Northern and Southern California, ACT field crews perform work in California, Nevada, Oregon, and Washington.

Areas of specialization include:

- Conveyor Component Installation, Service & Troubleshooting
- Conveyor Belt & Splicing Services
- Structural Steel Install, Modification and Repair
- Dust Control System Installation, Service and Repair
- Outage/Shutdown Support Labor
- Preventative Maintenance Servicing & Reporting
- Silo & Storage Bin Cleaning





Belt Services

Advantages of ACT Service

The ACT Group understands our customers. We know when you ask for a belt to be spliced, you want it done 100%. While most belt vulcanizing companies “only splice”, we go above and beyond to meet your needs. Applied Conveyor Technology uses the latest equipment and parts in the belting industry to get the job done. Our warehouse in Fontana, CA is stocked with over 24 rolls of the most common belting in the industry, along with mechanical fasteners of all types to ensure you are always covered.

Services & Products

- *Heavy & Light weight belt services*
- *Finger Splicing available*
- *Full line of Domestic & Import Belt*
- *Full line of Mechanical Fasteners*
- *Belt rolling & disposal*
- *Cold-bond Vulcanization*
- *18-60” Vulcanization capable*

Splicing Done Right

Every time you request a splice, the following services are included, no questions asked.

- *Belt removal and install*
- *Remove idlers or other equipment required to splice*
- *Mechanical and Vulcanized splices*
- *Tracking of the belt**

*Belt tracking is assessed during the bidding phase. Any extensive tracking is T&M, or quoted prior to arrival.

Joining Options



Superscrew



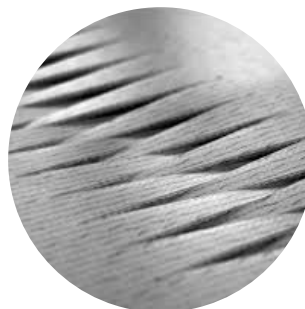
Bolt Plate



Titan Staple



Clipper Staples



Finger Splice



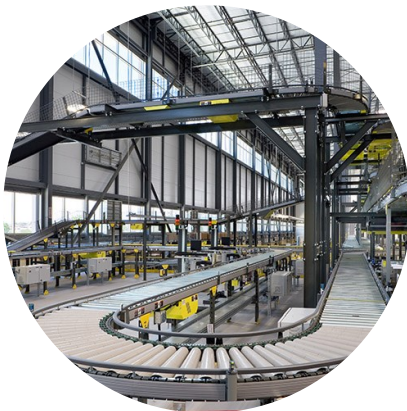
Distribution & Manufacturer Services

Service Tailored to Your Needs

The ACT Group has been serving the West Coast for over 25 years. We know that your equipment is the heart and soul of your operation, and we are here to help. Whether you want to generate a unique Preventive Maintenance Plan, or have an emergency crew on call 24/7, Applied Conveyor Technology is your answer. Our technicians have the skills necessary to have your facility running at its best.

Services

- *Equipment Lubrication*
- *Belt removal and install*
- *Repair and service rollers and chain conveyors*
- *Fluid Distribution Components*
- *Sorting Conveyor Service*
- *System Troubleshooting (Mechanical and Electrical)*
- *Replacement Parts*
- *Engineering and System Integration*
- *New Installation of Equipment*





Silo Cleaning

Advantages of ACT Service

The ACT Group has been in the Silo Cleaning business for 25 years. We know a plugged or slow draining silo costs you money! Our Silo Cleaning Whip allows us to clean a silo without the need for confined space entry. We eliminate the need for exposing workers to unsafe conditions, by safely positioning equipment on top of the silo. The ACT Group also offers scheduled maintenance cleaning and flow aid products to avoid costly plugging!*

Safety First!

The following services are always included when you request a silo cleaning quote.

- *Comprehensive evaluation of silo conditions during proposal process*
- *Factory trained technicians*
- *Explosion-Proof lighting for safe visibility*
- *OSHA 30 and MSHA Part 46/48 Trained*
- *Strategic cleaning to maximize flow and production*

**On occasion, confined space is required. This will be determined during the proposal process.*



Silo Whip

“The ACT Group helped us clear a silo that had been plugged for 18 years, all without confined space entry. ...”

- IGM



Dust Collection

The ACT Group is your one-stop shop for several different models of industrial dust collectors for many material handling applications. You will find a variety of dust control equipment that is low-maintenance and easy-to-install for both horizontal and vertical applications.

As a distributor for various vendors and products, The ACT Group is ready and able to address your dust collection needs, both now and in the future. ACT's dust control equipment options are specially designed to solve dry material handling problems with a design and product that is right for you!

If you already have an industrial-grade dust collector system, we also provide a wide range of dust control accessories and parts. Get the dust control solutions you've been looking for with The ACT Group. Request a free on-site evaluation or online quote specific to your collection needs. Get in touch with us [online](#) or give us a call!

Replacement Parts

Filter Bags

Cages

Bags Clamps

Ventures

Air Solenoids

Air Solenoid Repair Kits

Gauges

Diaphragm Valves

Timers

Vibration Sleeves

Controls



Partners

Imperial Systems- CMAXX

Camfil Farr

Donaldson Torit

Nederman

NordFab

US Duct

Aerodyne

Standard Filter

Goyen & MAC

New York Blower

Twin City Fan





30
The ACT Group
Year Anniversary

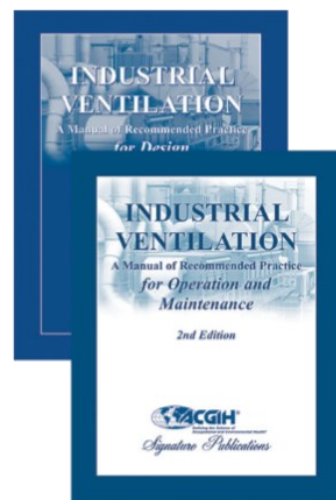
Industrial Ventilation

Industrial Ventilation applications are diverse and vary in many different ways. The proper ventilation need for your application is not a one-size-fits-all solution. At The ACT Group, we take our 75 years of Industrial Ventilation knowledge to ensure you are provided with the best possible solution to your ventilation challenges. The use of the ACGIH Industrial Ventilation Manual is at the heart of our design and product catalogue.

We use The ACT Group's knowledgeable staff is here to assist you in your Industrial Ventilation needs! Ranging from local exhaust systems, dilution systems, and pneumatic conveying, ACT has the product and know-how to make your facility safer, and more productive!

Services & Products

- *Engineering of Industrial Ventilation Systems*
- *Exchange Air Systems*
- *Dilution Systems*
- *Local Exhaust Systems*
- *Cutting Table & Portable Fume Extraction Systems*
- *Providing MERV 15 Filtration Efficiency – best in the industry (99.9% Efficiency on 0.3 to 0.5 Micron)*



30 The ACT Group Year Anniversary

Product Line

 <p>Dustco An ACT Group Company</p>	<p>Dustco: Dust Suppression Systems, Dust Suppression Chemical, Fog Cannons, Air Cannons, Transfer Point Technologies, and Conveyor System Fabrication.</p>
 <p>Spectrum</p>	<p>Spectrum Belting: Full line of Grade 2, Grade 1, and Heat Resistant belting. Carrying a wide variety of carcass types and cover compounds. Over 20,000 feet stocked in our Fontana warehouse.</p>
 <p>FLASH CANNON</p>	<p>The Flash Cannon– By ACT: Need flow support? Need it fast? The Flash Cannon is the fastest and most powerful cannon in the industry. Don't pay more for less, when you can have the best. The ACT Flash Cannon is the flow aid of choice when dependability matters, and you shouldn't have to pay more for it. Engineers worked night and day to engineer the cost out of the Flash, so we passed that saving on to you. Get flowing.</p>
 <p>DOUGLAS</p>	<p>DOUGLAS MANUFACTURING - Conveyor Components: Pulleys, Lagging, CEMA 'B', 'C' and 'D' Idlers, Conveyor Covers, Idler Guarding, Magnetic Separators, Take-Ups, and additional conveyor accessories.</p>
 <p>ENDURIDE</p>	<p>Enduride- The world leader in composite idler technology and manufacture of the One-Man Idler, Enduride brings the latest technology to you. MSHA approved, CEMA C, D & E and F. Why stop at MSHA Approved Idlers? Enduride has a MSHA RECOMMENDED safety netting, which revolutionizes your plant safety and Preventive Maintenance program.</p>
 <p>CIPCO</p>	<p>CHICAGO INDUSTRIAL PUMP COMPANY : Submersible Pumps: Pitbull® Pneumatic Sump and Transfer Pumps, Sludge Transfer Pumps, Filterpress Feed Pumps and Condensate Return Pumps .</p>
 <p>MLT Minet Lacing Technology</p>	<p>Minet Lacing Technology: Minet was founded in 1947 with one aim: to manufacture conveyor belt fasteners, and quality splices adapted to the needs, and easy to use. Manufacturer of the one and only Superscrew® fastener, the only fastener as strong as a vulcanized splice!</p>
 <p>PS DOORS DOOR & SAFETY SOLUTIONS FOR INDUSTRY</p>	<p>PS DOORS - Industrial Doors: Industrial Sliding Doors, Industrial Swing Doors, Pressurized Access Doors, Coal Mill Hatches, Ventilation & Louvers, Sliding Roof Hatches and Safety Products (Ladder Safety Gate, Grabsafe®, Hatch-Grip, Hatch-Safe, Mezzanine Gates and Pallet Safety gate).</p>
 <p>AMERICAN EAGLE MANUFACTURING LLC</p>	<p>American Eagle Manufacturing- Bulk Material Handling Solutions: Belt Cleaners & Accessories, Belt Alignment, Belt Support, Sealing Systems, Tail Protection, and Accessories. American Eagle has you covered in the transfer point. As the leader in urethane technology, wear products come second nature to AEM. Keep material on the belt where it belongs, with the help of American Eagle</p>



Dust Suppression – High Pressure Fog

Engineered Dust Suppression Solutions

High Pressure Fog or Spray refers to water droplets that have been generated using water at extreme pressures and highly engineered nozzles and equipment. Water, when pressurized and forced through precision nozzles can be atomized into small droplets less than 10 micron in diameter.

Fog/Spray droplets evaporate directly into dry air from the surface of the droplet. By creating a smaller droplet size, the ratio of Volume vs. Surface area is greatly increased. Since dust suppression only takes place from the surface of the water droplet, the greater this ratio the more effective

Services & Products

- Engineering of HP Systems
- Installation & Maintenance of HP Systems
- Single-Point Economic Dust Suppression Solutions
- Fully Integrated Dust Suppression Systems
- Sub-zero & High Temp Climate Control Available
- Fog Cannons available for open area control
- Odor Control
- Residual Control with Treated Fog
- Replacement Nozzles
- 24/7 Technical Support
- Low Pressure Compliant Systems



Before



After



Dust Suppression– Foam & Surfactant

Chemical Suppression (Surfactant)

The surface tension of pure water is 72.6 Dyne/cm. This figure can be reduced by increasing the number of water droplets and reducing their individual size. In effect, the water becomes “Wetter” and hence less water needs to be used while maintaining the desired result. A small amount of surfactant will reduce the surface tension from 72.6 to about 28 Dyne/cm. The amount of concentrate will be directly proportional to the volume of water entering the injector, regardless of variations in flow pressure which may occur in the main line.

Chemical Suppression (Foam)

The addition of specific surfactants into filtered water creates an ideal solution for preventing dust becoming airborne around transfer areas. However, once this errant dust is returned to the transport system the restraining effect of the mixture decreases. Maintaining the dosing method and utilizing a suitable surfactant, then adding pressurized air, ‘foam’ is created which can provide a blanketing effect, thus holding the product to the conveyor. The foam has an excellent residual effect enabling the number of spray points to be reduced. An established foam system can expand the surface area of a given volume of water 60 to 80 times, thus allowing for a much lower rate of moisture addition to the product. Raw water is drawn from a main supply or storage tank via a booster pump; it is then fed through a series of filters to remove solids likely to block the spray nozzles. The filtered water passes through a Dosatron which draws up a predetermined amount of Surfactant and adds it to the water. The Water/Surfactant along with pressurized air is fed into mixing chambers which then emerges as foam.





Spectrum



Year Anniversary

SPECTRUM Conveyor Belting

Belting for Your Conveying Needs

Applied Conveyor Technology is proud to announce the addition of a heavy duty black belt product offering to our extensive product lineup. With over 25,000 feet, our locally stocked conveyor belt inventory is ready and available to meet the most common general industry requirements on the West Coast. Factory direct belting for significant lengths or challenging applications is also available.

ACT's SPECTRUM™ line of belting holds up to the most punishing applications and operating conditions. This allows us to offer our customers a balanced and cost-effective alternative to meet their demanding conveyor belting needs. Applied Conveyor Technology offers (6) types of textile conveyor belts for the transport of bulk or other materials. The two most common carcasses and the ones locally stocked, are Spectrum Grade II and Spectrum-Flex.

Features & Benefits

- Conveyor belting that is manufactured to ISO, RMA and CEMA standards.
- Polyester/ Polyamide Fabric
- Standard Woven or Straight Warp Carcass options
- Abrasion/ Temperature Resistant Covers
- MOR Covers
- Grade 1 & 2 Covers stocked
- Customizable Specialty Belt
- Lightweight Belting
- Local stock.



Stocked Belting

SPECTRUM Grade II

- 2 Ply 220 3/16" x 1/16" 24" thru 36"
- 3 Ply 330 3/16" x 1/16" 24" thru 48"

SPECTRUM-Flex (Straight Warp)

- Single Ply 400 1/4" x 1/8" 36" & 48"

SPECTRUM-Heat (High Temp)

- 2 Ply 220 3/16" x 1/16" 24" thru 48"
- 3 Ply 330 1/4" x 1/16" 24" thru 60"

If the size of belt you need is not listed, please call us, we probably have it!





STD Black Rubber

The standard black skirting rubber is the most commonly used skirting on the market. The attraction with this skirting is the relatively low cost compared to other options in the field. The rolls are sold in 50 foot lengths, and span 1/4" to 1" in thickness, depending on your needs. Standard widths are 4, 6, 8, and 10", with options of 12", 36", and 48" available.



Natural Rubber (Orange)

Orange Skirting Rubber (40 Durometer) has better abrasion resistant properties with up to 3-5 times the wear life of black natural skirting rubber. The rolls are sold in 50 foot lengths, and span 1/4" to 1" in thickness, depending on your needs. Standard widths are 6, 8, and 10", with options of 12", 36", and 48" available. This product can be cut to many different sizes, from 4" to 48" widths, this is a versatile product used in the most demanding wear and impact areas.



Urethane Skirting

Our Urethane Skirting options are a solution for dust containment in bulk transfer points. Designed to have low coefficient friction that reduces drag, BLUE-FLEX, M-FLEX, and DELTA FLEX combines a high tensile strength resulting in longer wear and less tearing compared to rubber skirt board. The benefits extend beyond dust containment to less maintenance cost, less downtime for replacement and less overall belting and motor fatigue.



Specialty Skirting Options

Applied Conveyor Technology offers a full line of specialty skirting. This includes Apron Seal and BOCO seal-adjusting skirting from Martin Engineering. The Apron Seal skirting is widely used throughout the industry as a tool to fight fugitive dust, with its second lip, it effectively keeps fugitive dust contained in the skirt box. The BOCO skirting is self-sealing, using a pivot in the system to effectively hold the skirting to the belt using gravity. This is great for areas that seldom receive maintenance attention, but require constant sealing.



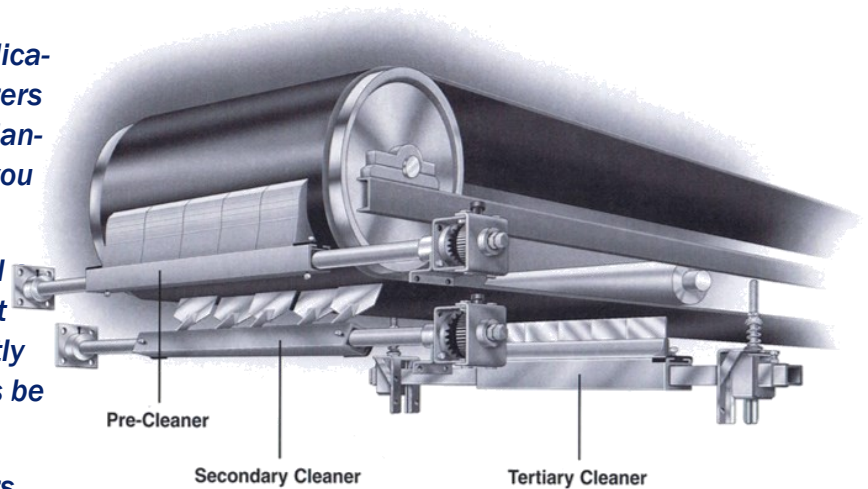
Belt Cleaning

The Difference in Cleaning

The ACT Group has belt cleaners for every application. We do this by partnering with manufacturers such as Martin Engineering, American Eagle Manufacturing and many others, in order to bring you the best possible product.

At ACT we do not just sell belt cleaners, we sell complete system, with the know-how to back it up. If our suggested cleaner doesn't significantly reduce your carryback problem, we will always be there to make it right.

Whether you need Primary, Secondary cleaners, or Tertiary, The ACT Group is the answer to your belt cleaning woes.



Retrofit Replacement Blades

for...

- Martin® Engineering
- American Eagle MFG
- ASGCO MFG™
- Argonics®
- Flexco®
- ARCH®
- Superior®
- Benetech®





FLASH CANNON

30
The ACI Group
Year Anniversary

Air Cannons

The Flash Cannon

The Flash Air Cannons are blast aerators consisting of a compressed air reservoir with a quick opening valve that releases the stored air in a sudden, high-energy blast. This blast is directed through a discharge pipe to aerate and dislodge material, and restore flow.

In a direct blast Air Cannon, the air in the reservoir or tank passes directly into the discharge pipe without bends or obstructions in the air course that impede the flow of air. This is important because the quicker the air discharges, the greater the velocity and force of the blast and, therefore, the greater the amount of material affected.

When used in combination, multiple Air Cannons can restore flow to hundreds, thousands, or millions of cubic feet of material. Air Cannons are activated manually or by a micro-controller based sequencing timer that controls the firing time interval and sequence of one or more Air Cannons. For more information, please visit this [link](#) for the product video.



Features

- Designed for High Temperature Environments
- Safety-Smart Isolation Valve included
- Produces Results Quickly and Efficiently
- Energy Efficient
- Minimal Maintenance
- No Leakage
- No lubrication required.
- More Powerful Air Blast
- Ease of Service
- 5-Year Warranty

AIR BLASTER MODEL		AIR PRESSURE (PSI)				
		70	80	90	100	
G400-40-50 (4" Discharge)	→	698	851	997	1072	
G400-40-150 (4" Discharge)	BLAST FORCE (LBS)	1070	1220	1383	1532	
G400-60-300 (6" Discharge)		1735	2000	2320	2525	
G400-60-650 (6" Discharge)		→	2065	2380	2761	3005



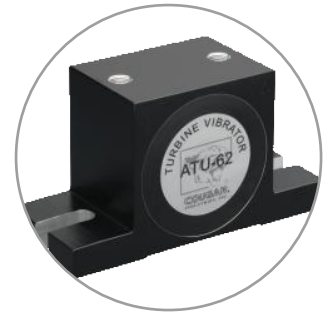
Vibration

The ACT Group offers a full line of vibrators from multiple manufacturers. Whether you are looking for a Cougar Vibrator, Italtibras, Oli, or a Global Manufacturing vibrator, ACT has you covered.

Applied Conveyor Technology's expertise in material flow management can assist in correct vibration selection and placement. When your material needs to flow, and remain flowing, ACT is here to help.

Vibrators Available

- Screen Vibrators
- Truck Vibrators
- Electric Vibrators
- Hydraulic Vibrators
- Piston Vibrators
- Roller Vibrators
- Turbine Vibrators
- Ball Vibrators
- Portable Pneumatic Vibrators
- Railcar Vibrators





Transfer Point Technologies

Belt Alignment



The ACT Group Belt Alignment Solutions provide immediate, continuous precision adjustment of wandering conveyor belts. The Tracker™ works where other belt training devices fail to reduce edge damage, prevent spillage and extend belt life. The Martin® Tracker™ Reversing conveyor belt tracking solution continually adjusts hard-to-track reversing conveyors. It effectively centers the belt regardless of the direction of travel.

Belt Support



Belt Support solutions absorb the force of falling material to prevent damage to the belt and structure and to help eliminate spillage. Less spillage means increased profits, and cleaner equipment. Preventing spillage is also an important factor in keeping a plant safe, by eliminating unnecessary worker exposure to the conveyor system during clean-up.

Tail Pulley Protection



When material gets caught in the tail pulley, it can damage your entire conveyor system. To prevent damage and maximize the life of your belt and tail pulley, Martin offers a line of tail protection belt plows that discharge material to the side of the belt for easy management and cleanup .

Chute Structure



The ACT Group offers the complete solution to chute structure. With our modular design, you are able to customize your chute structure for any length and height needed. The support legs are full adjustable, eliminating the need to weld or cut. All you need is a drill and bit, and you can be up and running with your new system in no time!

Safety Accessories



Applied Conveyor Technology provides a wide variety of safety products and accessories for protecting workers from hazards and risks. This includes access doors, e-stop switches, belt alignment switches, conveyor guarding, and much more.



Idlers & Pulleys

Douglas Manufacturing



The ACT Group offers idlers and pulleys from Douglas Manufacturing. With idlers for most common belt sizes in stock, along with a full line of pulleys, one call to ACT ensures you get your parts as soon as you need them.



Enduride



We also carry Enduride, the world leader in composite idler technology and manufacture of the One-Man Idler. Enduride brings the latest technology to you, MSHA approved. Enduride has a full line of CEMA C, D & E and F idlers! Why stop at MSHA Approved Idlers? Enduride has a MSHA RECOMMENDED

safety netting, which revolutionizes your plant safety and Preventive Maintenance program.

For more information on the Enduride product, please visit this [link](#).



Railcar Unloading

Unload Smarter & More Efficiently

Make the unloading of bulk materials from railway hopper cars cleaner, safer and more productive. Applied Conveyor Technology's systems connect the car to the receiving conveyor, open the hopper gate and enhance the outflow of material. With vibrators to assist, unloading is a clean breeze.

Safely open Railcars with options provided by Applied Conveyor Technology. With our equipment, you can forget opening Railcars by hand again. With 2 models to choose from, you have a choice to what fits your application and budget. With our experience, we have the ability to provide the best option for your needs, and with the service know-how, you'll never have to worry about finding someone to repair your equipment.

Bootlifts



Martin Eng. SBL Bootlift



Martin Eng. DBL Bootlift

Openers



Martin Eng. Railcar Opener



Martin Eng. Gate Jack Opener





Level Detection

Leveling & Plug Detection made easy

To operate any process efficiently, it is essential to measure, actuate, record and control. ACT offers the best measurement solution for your needs, enabling maximum return on your investment. When investing in ACT's measurement products and solutions you are receiving the best technology, reliability and service in the business. Comprehensive measurement solutions serving any industry ACT measurement products provide world-class measurement solutions for any industry, utility or municipality. Latest innovations deliver technological solutions to make it easier for you to run your plant. ACT's measurement products are based on common technology, providing a common look and feel and method of operation. This results in products that are easy to configure, to integrate, and to maintain.

ACT's measurement products portfolio:

- Analytical measurements
- Flow measurement
- Natural gas measurement
- Valve automation
- Pressure measurement
- Temperature measurement
- Recorders and controllers
- Level measurement
- Device management
- Force measurement
- Service

Industries served:

- Mining and construction
- Aggregates
- Fertilizers
- Chemical processing
- Power generation
- Food and beverage
- Pulp and paper processing
- Upstream oil & gas
- Downstream oil & gas



Pumps

Pump using only air...

The Pitbull pump is an innovative, simple solution to many of industry's difficult pumping applications. Using only two check valves and a hollow chamber, the Pitbull will fill and then discharge almost any combination of liquid and solids that can flow through its wide open inlet.

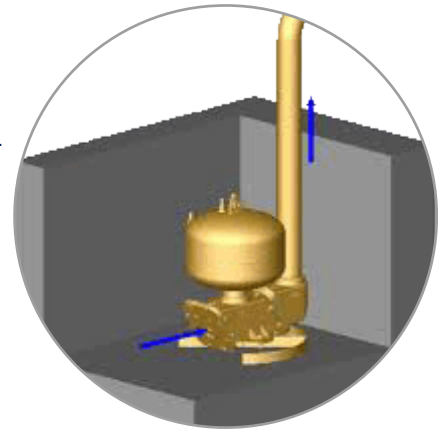
The operation of the Pitbull is inherently automatic unlike conventional pumps, so it will match the cycle rate to the inflow rate, and shut itself off when flow stops without needing level controls. Pitbulls use compressed air as the motive force, acting directly on the liquid without the need for diaphragms or seals. The all-pneumatic operation simplifies installation, eliminates shock hazards and is suitable for explosion-proof areas.

We provide a full line of submersible pumps along with sludge transfer, filterpress feed and condensate return pumps.

Pitbull® pumps can handle flows from 2 gpm to 2000 gpm at discharge pressures up to 125 psi.

But the real story is not how much the Pitbull® can pump, but what it can pump... with full pipe diameter passages and low internal velocities, all kinds of solids, trash and abrasives can pass through this pump.

By having no impellers... no seals... no motors... no diaphragms... and no moving parts in contact with the liquid other than two check valves, the Pitbull® can take on the applications that are maintenance nightmares for conventional pumps.





Corporate Office—Fontana, CA



The ACT Groups corporate office and main production facility is strategically located in Southern California, near numerous major freight and shipping outlets.

Our main office consists of financial, technical, engineering and project personnel. Field crews are also dispatched from this location, servicing all of California, Nevada, and the Pacific Northwest.

ACT's 18,000 Sq/Ft fabrication facility is also located at this site, in close proximity to numerous outsourced services such as machining and finish coating.

PHYSICAL ADDRESS

**14644 El Molino St.
Fontana, CA 92335-6205**

BILLING / REMIT TO

**14644 El Molino St.
Fontana, CA 92335-6205**





References

A/C Power	Trona, CA	Granite Construction	Arvin, CA	O'Hair Shutters Inc	Lubbock, TX
Accent Marble Company	Sherman, TX	Granite Construction	Indio, CA	Omya California	Lucerne Valley, CA
AES	Delano, CA	Granite Construction	Littlerock, CA	Otay Rock	Otay, CA
AES	Seward, AK	Granite Construction	Lower Lake, CA	Oxbow	Long Beach, CA
All American	Corona, CA	Granite Construction	Sacramento, CA	Pacific Steel and Casting	Berkley, CA
Alpha Coal	Gillette, WY	Granite Construction	Salt Lake City, UT	Pirelli Tires	Hanford, CA
Asarco	Ray, AZ	Graymont	Wendover, NV	Phelps Dodge/FMI	Morenci, AZ
Ash Grove Aggregates	Kansas City, MS	Hanson Aggregates	Portable Plant, CA	Plains Cooperative Oil Mill Inc.	Lubbock, TX
Ash Grove Cement	Durkee, OR	Hanson Aggregates	San Diego, CA	Planters Oil Mill	Pine Bluff, AK
Ash Grove Cement	Seattle, WA	Holiday Rock	Upland, CA	Potlatch	Lewiston, ID
Basic Vegetables	King City, CA	James Hardie Building Products	Fontana, CA	Rio Tinto	Salt Lake City, UT
Big Four-Farming	Bakersfield, CA	James Hardie Gypsum	Las Vegas, NV	Saint Gobain Container	Los Angeles, CA
BP Refinery	Carson, CA	Johns Manville	Willows, CA	Saint Gobain Container	Madera, CA
BP Wilmington	Wilmington, CA	Karen Beef	South Africa	Southdown Cement (Cemex)	Victorville, CA
Calaveras Materials	Fresno, CA	Kinross	Fairbanks, AK	Southern Cotton Oil Company	Lubbock, TX
Calaveras materials	Portland, OR	Knik Construction	Seattle, WA	Stone & Webster	Toronto, Canada
Calaveras Materials	Tracy, CA	Koch Carbon	Long Beach, CA	Teichert Aggregates	Sacramento, CA
California Portland Cement	Colton, CA	Kraft Foods	Toronto, Canada	Teichert Aggregates	Truckee, CA
California Portland Cement	Mohave, CA	Lafarge Corporation	Vancouver, WA	Triangle Rock	Silverado Canyon, CA
Cemex	El Centro, CA	Lafarge Corporation	Seattle, WA	TXI	Riverside, CA
Cemex	Houston, TX	Lehigh Cement	Cupertino, CA	TXI	Dallas, TX
Cemex	Long Beach, CA	Lehigh Cement	Tehachapi, CA	TXI	Frazier Park, CA
Cemex	Phoenix, AZ	Lehigh Cement	Redding, CA	TXI	Oro Grande, CA
Cemex	Victorville, CA	LSI	Emeryville, CA	TXI	Port Costa, CA
Colmac Energy	Mecca, CA	Metropolitan Stevedore	Anacortes, WA	Unimin Corporation	Ione, CA
Continental Mills	Kent, WA	Metropolitan Stevedore	Long Beach, CA	United Rock Products	Irwindale, CA
Cyprus Copper	Baghdad, AZ	Metropolitan Stevedore	Stockton, CA	US Battery	Corona, CA
Cyprus Copper	Green Valley, AZ	Mitsubishi Cement	Lucerne Valley, CA	US Borax	Boron, CA
Cyprus Copper	Miami, AZ	Morton Salt	Long Beach, CA	US Borax	Wilmington, CA
Dow Corning	Walnut, CA	National Cement	Lebec, CA	USG Company	El Centro, CA
Dustec-NSW	Australia	National Gypsum	Long Beach, CA	USG Company	Sperry, IO
El Dorado Disposal	Placerville, CA	National Gypsum	Richmond, CA	USG Company	Rainer, OR
Fritz Industries	Mesquite, TX	Newmont Gold	Carlin, NV	USS ET	Pittsburgh, PA
FST Sand & Gravel	Corona, CA	North American Chemical	Trona, CA	Vulcan	Corona, CA
General Chemical	Green River, WY	Nor-cal Waste	San Francisco, CA	Vulcan	Highland, CA
GH Hensley	Dallas, TX	Nu-core Steel	Seattle, WA	Vulcan	Sun Valley, CA
GP Gypsum	Long Beach, CA	O.H. Kruse	Ontario, CA		



License & Regulatory Information

Resale Acct #: SR-EHA-17-801050

CA State Contractor's License #: 700731

Class B: General Building Contractor: Applied Conveyor Technology, Inc.,
dba General Contracting Structural Services and Repair

NV State Contractor's License #: 0072789

Class A: A14-Steel Erection & Industrial Machinery: A20-Industrial Piping

MSHA ID #: NPN

NAICS: 811310

SIC: 3999,3822,1081,1241,1442,2421,2611,2999,3535

*Applied Conveyor Technology, Inc. is also
registered and certified with the following safety
compliance programs:*

